

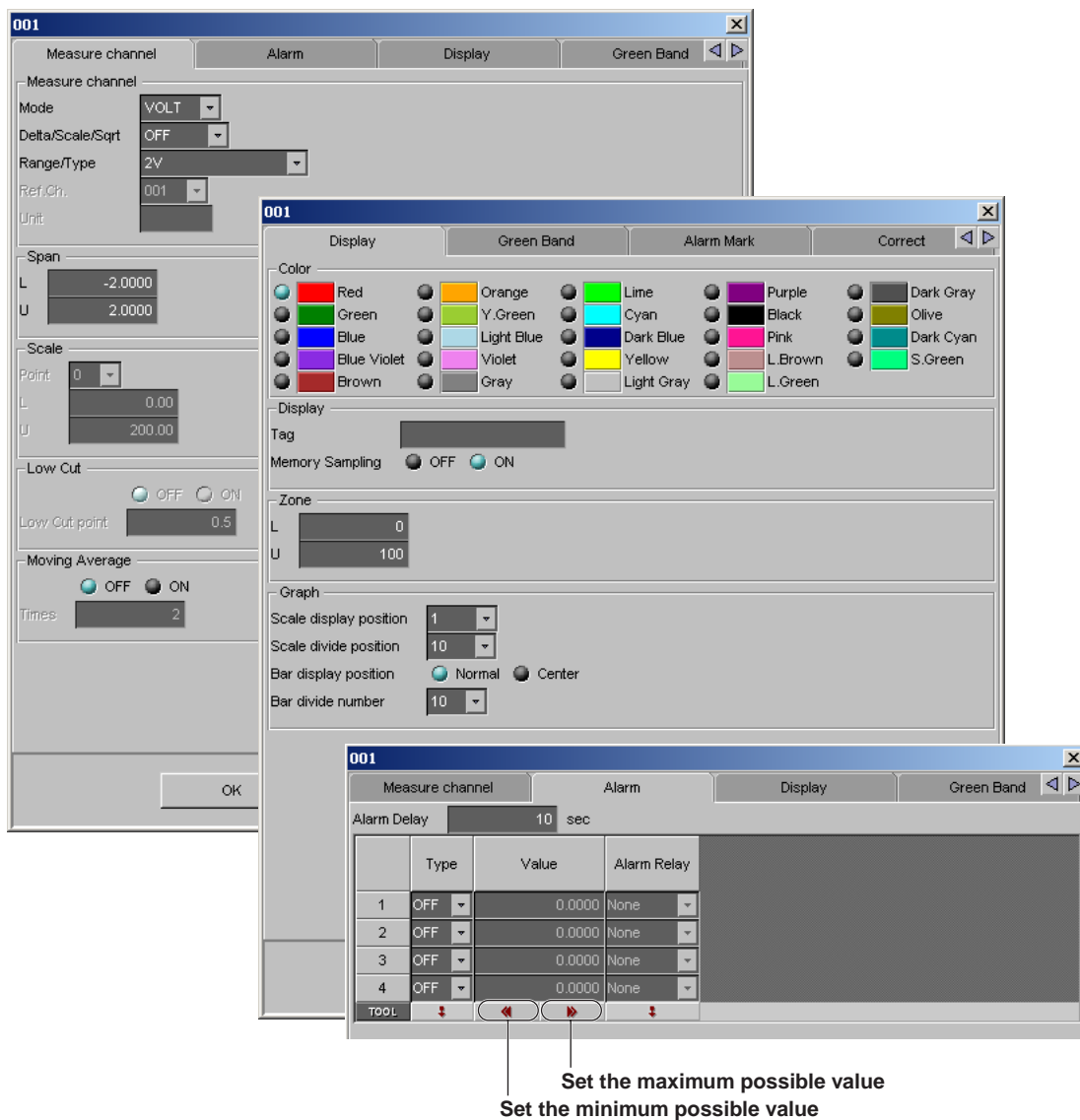
Please note the following alterations to the IM 04L41B01-61E.

Page 3-5 to 3-9 “3.3 Creating and Editing Hardware Setup Data”

Note that all of the blue explanatory text has been changed to black text.

Page 3-6 Addition to “3.3 Creating and Editing Hardware Setup Data”

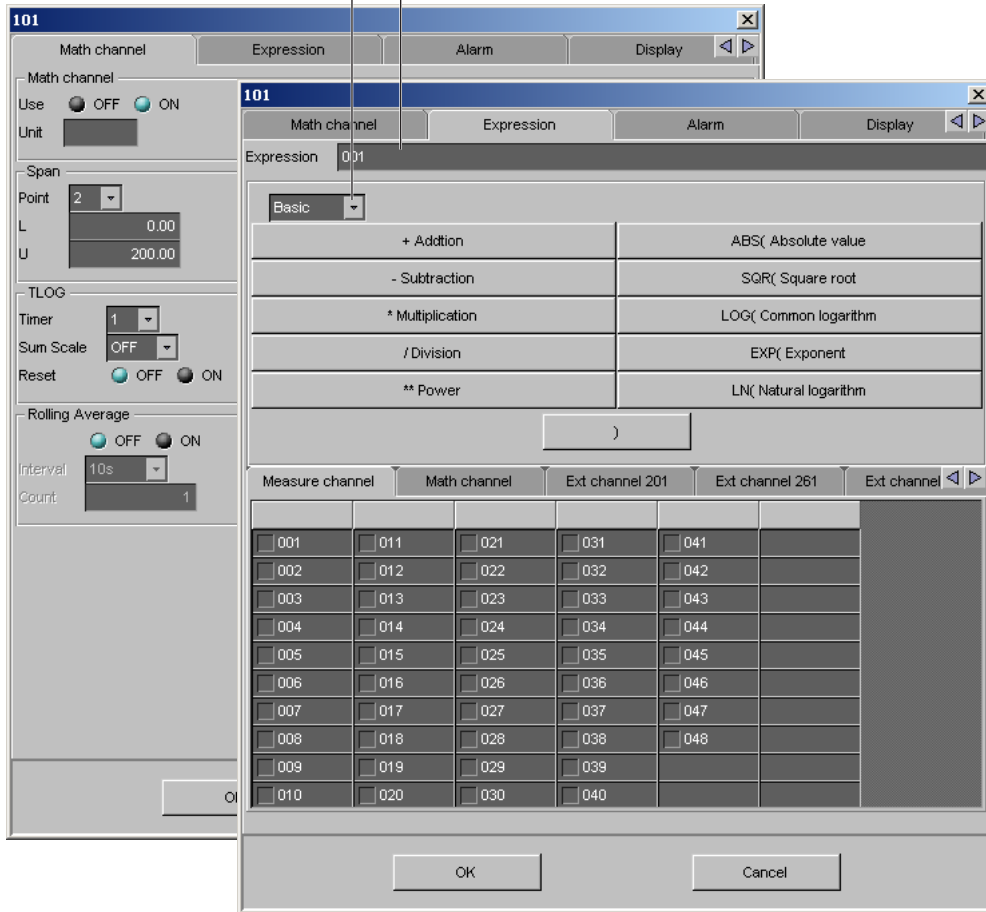
Channel setup screen (Measure channel)



Channel setup screen (Math channel)

Clicking here and selecting the list of operators switches the display

Select arbitrary channels from the measure channel, Math channel, and Ext channel tab pages, then select arbitrary operators to create an expression.



Channel setup screen (Ext channel)

